

# SPECIFICATION

## ZED 29 J ATEGO 10.5t

### TECHNICAL DATA

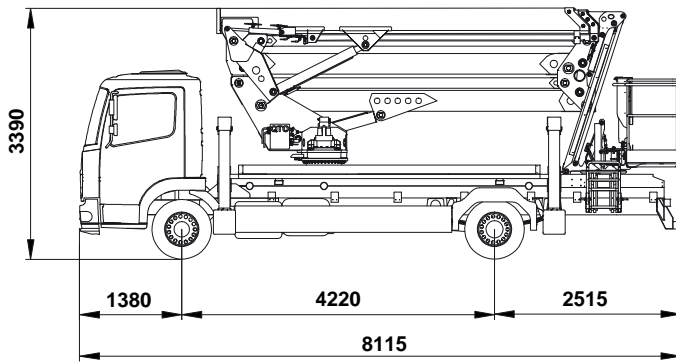
- Double pantograph + telescopic boom (main boom + two extensions)+ jib
- Sigma boom movement enabled by connecting rods
- 360° turret rotation on bearing turntable
- Proportional, electrohydraulic controls in basket and ground
- Engine start and stop controls from basket and ground
- Anti-slip, aluminium flatbed decking with tool tray walls
- Aluminium basket
- 90° right + 90° left hydraulic basket rotation
- Automatic hydraulically actioned basket levelling
- Basket load sensing device
- 4 hydraulic outriggers with ground pressure sensors
- Hydraulic system operated by vehicle's PTO
- 230 V AC CE electrical socket in the basket
- 1 flashing beacon
- Buzzer indicating PTO engaged
- Hour meter
- Standard boom colours blue (RAL 5017) or white (RAL 9010)
- CE certified

### PERFORMANCE

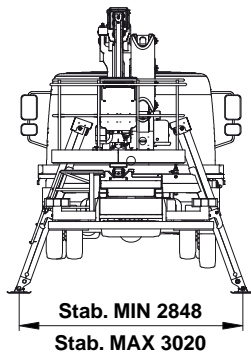
Working height	28.7 m
Platform height	26.7 m
Working outreach	15.5 m
Capacity	230 kg
Basket dim.	1800x700x1100 mm
GVW minimum	10,5 t



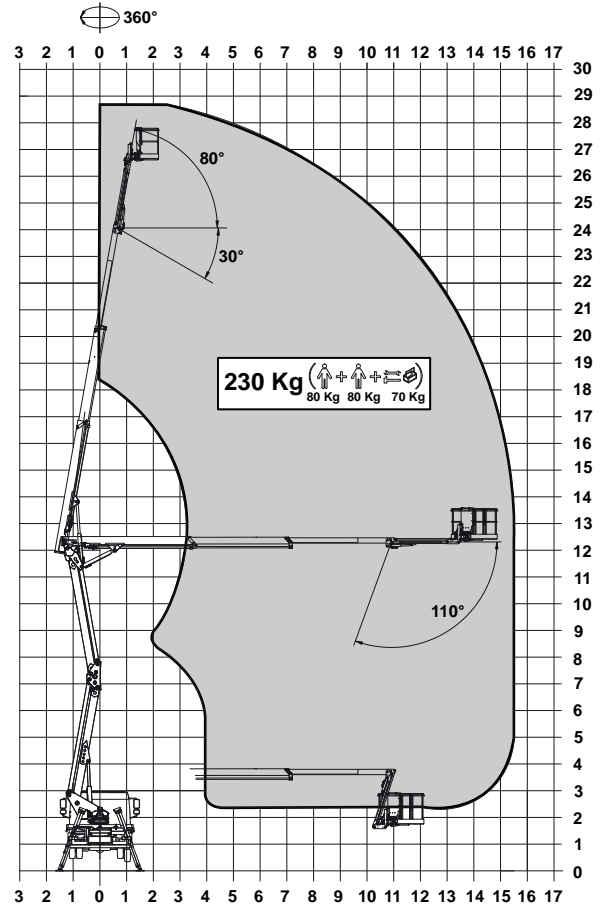
## DIMENSIONS



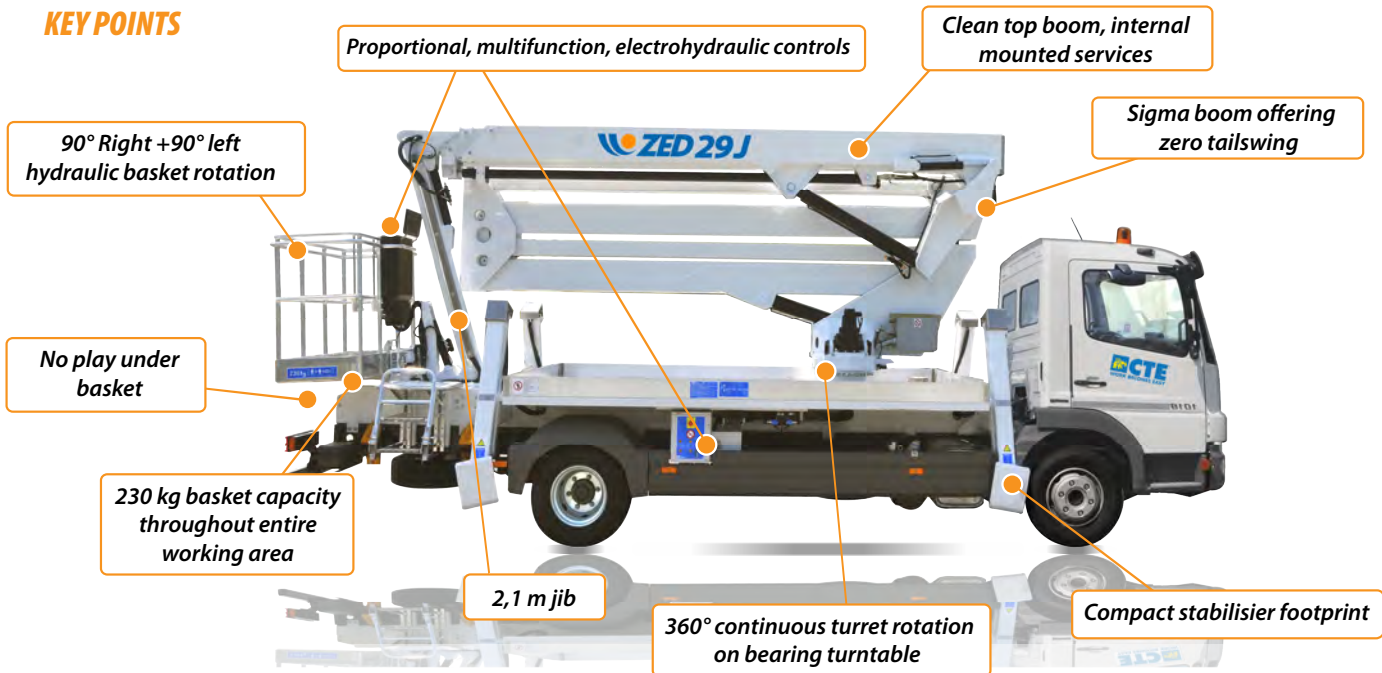
## OUTRIGGER FOOTPRINT



## WORKING ENVELOPE



## KEY POINTS



Product specifications are subject to change without notice or obligation. Technical features and drawings in this brochure are for illustrative purposes only. \_ZZ9J- ed 09/10\_ en



### CTE S.p.A.

Headquarter and Factory - Rovereto (Tn): via Caproni, 7  
ph. +39 0464.48.50.50 - fax +39 0464.48.50.99

Factory - Bertinoro (Fc): viale 2 Agosto, 670  
ph. +39 0543.44.88.30 - fax +39 0543.44.83.43

e-mail: [info@ctelift.com](mailto:info@ctelift.com)

CTE UK Ltd - Enderby Leicestershire - UK  
CTE FRANCE Sas - Achères - Saint Clair du Rhone - France



[www.ctelift.com](http://www.ctelift.com)