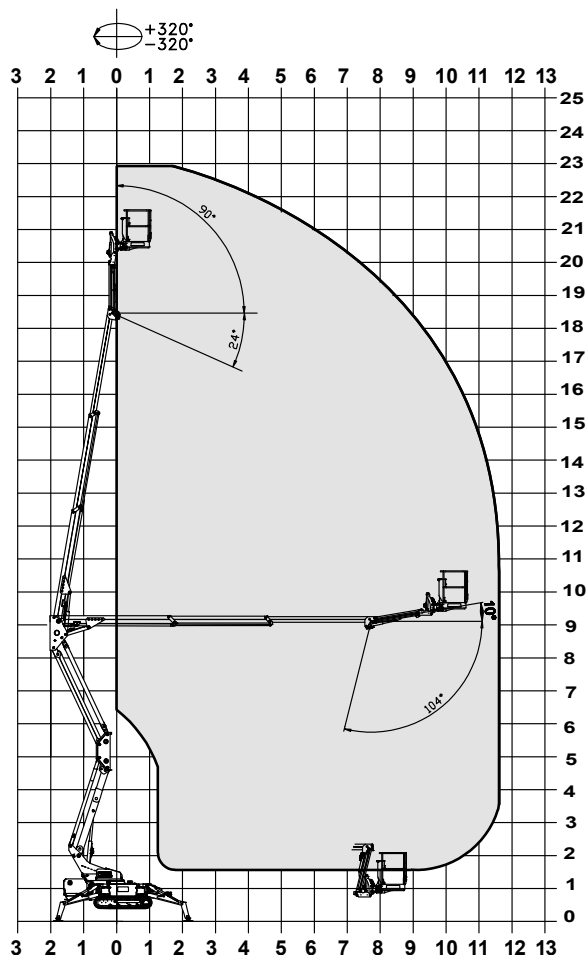


# SPECIFICATION

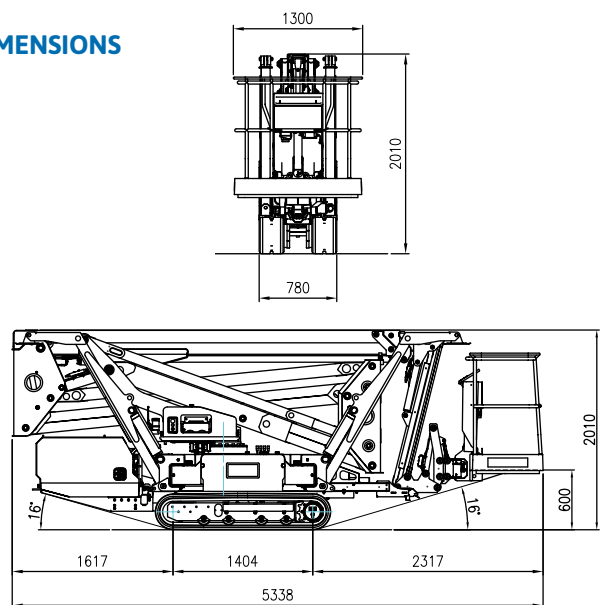
# TRACCESS 230 E

## 300Ah LITHIUM BATTERY

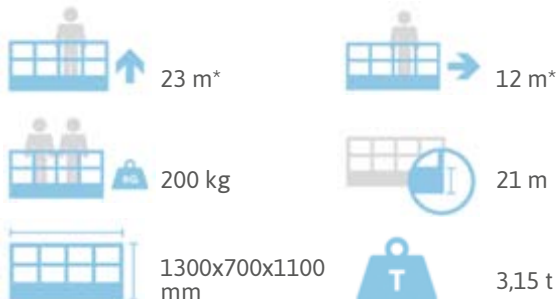
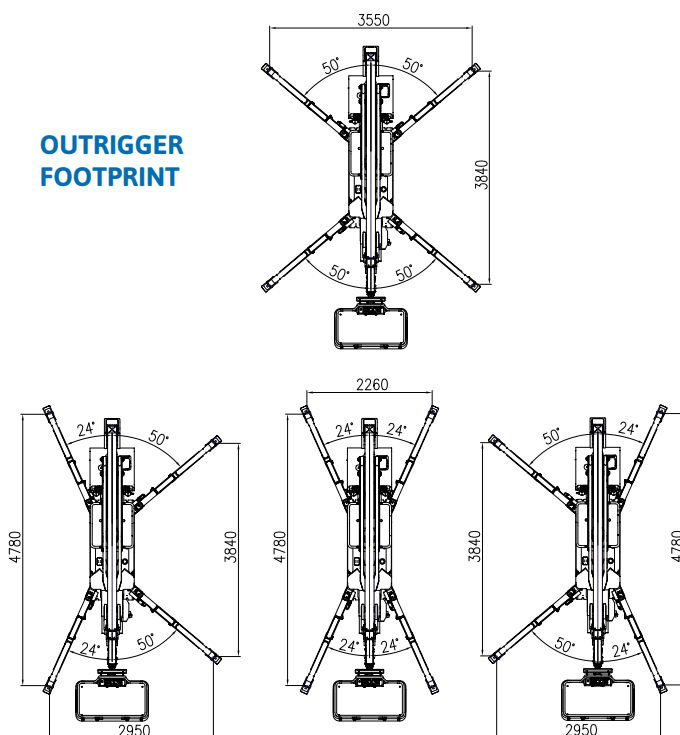
### WORKING ENVELOPE



### DIMENSIONS



### OUTRIGGER FOOTPRINT



\* outreach and height max values and repeatability can change within  $\pm 3\%$  due to manufacturing variation and working condition.

Product specifications are subject to change without notice or obligation. Technical features and drawings in this brochure are for illustrative purposes only. \_TRACCESS 230 E - ed. 04/16



**CTE S.p.A.**  
**Headquarter and Factory**  
 7 Via Caproni - Rovereto (TN) IT, 38068  
 Ph. +39 0464 48.50.50 - Fax +39 0464 48.50.99  
 info@ctelift.com - [www.ctelift.com](http://www.ctelift.com)  
**Factory 5 Loc. Terramatta - Rivoli Veronese (VR) IT, 37010**  
**CTE UK Ltd Enderby Leicestershire - UK**

