

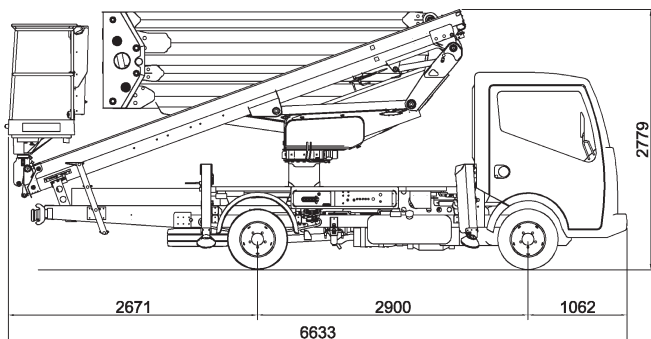
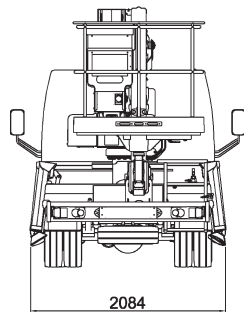
SPECIFICATION (PRELIMINARY)

CTEZED 20.3 H

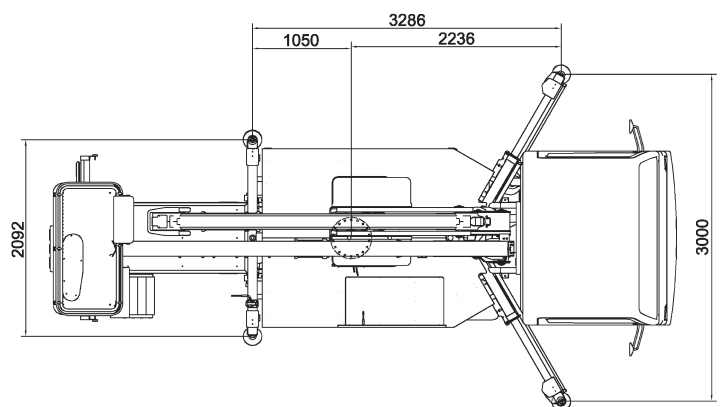
TECHNICAL DATA

- Double pantograph + telescopic boom with single extension
- Sigma boom movement enabled by connecting rods
- $\pm 310^\circ$ Turret rotation
- Proportional, electrohydraulic controls in basket and ground
- Smooth proportional controls with acceleration and deceleration ramps
- Engine start and stop controls from basket and ground
- Anti-slip aluminium flatbed decking
- Basket base in composite material with aluminium guardrails
- $60^\circ + 60^\circ$ hydraulic basket rotation
- Automatic hydraulically actuated basket levelling
- 4 hydraulic outriggers with ground pressure sensors: front extendable jacking outriggers and rear straight down stabilizers
- CAN BUS electronic management system
- Hydraulic system operated by vehicle's PTO
- Buzzer indicating PTO engaged
- Hour meter
- 230 V AC in the basket
- Standard boom colours blue (RAL 5017) and white (RAL 9003)
- EN 280:2015 CE certified

DIMENSIONS








OUTRIGGER FOOTPRINT



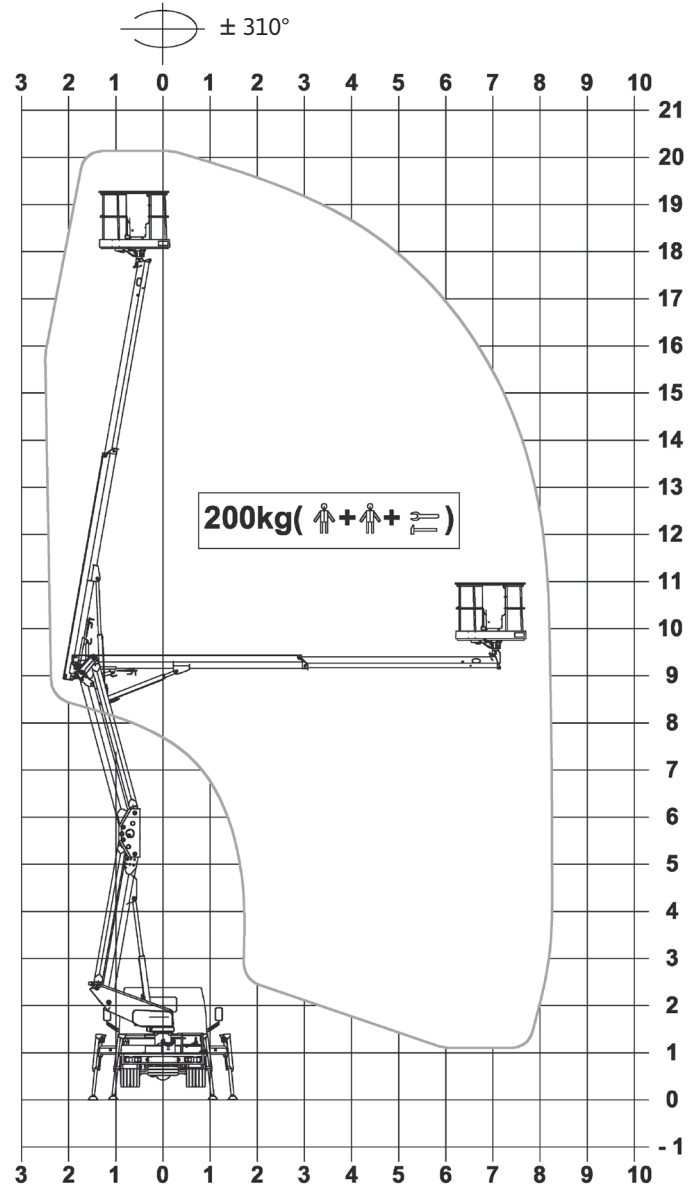
SPECIFICATION (PRELIMINARY)

CTEZED 20.3 H

WORKING ENVELOPE

-  20 m*
-  200 kg
-  1400x700x1100 mm
-  8,5 m*
-  18 m
- GVW min** 3,5 t

* outreach and height max values and repeatability can change within $\pm 3\%$ due to manufacturing variation and working condition.



Product specifications are subject to change without notice or obligation. Technical features and drawings in this brochure are for illustrative purposes only. _ZED 20.3 H - ed. 04/17



CTE S.p.A.
Headquarter
 7 Via Caproni - Rovereto (TN) IT, 38068
Ph. +39 0464 48.50.50 - **Fax** +39 0464 48.50.99
 info@ctelift.com - www.ctelift.com
Factory 5 Loc. Terramatta - Rivoli Veronese (VR) IT, 37010
CTE UK Ltd Enderby Leicestershire - UK

